

# CX-500

Pearl's original CX-500 series is a popular priced medium grade cymbal producing a variety of brilliant tonal colors with the "edge" and power needed by rock drummers. Special effect cymbals including China type round out the basic Ride, Medium, Crash and Hi-Hat types.



- RIDE: A bright, clear attack with longer sustain. (Available sizes: 18", 20", 22")
- MEDIUM: Use for ride or powerful crash effects (Available sizes: 16", 18", 20", 22")
- CRASH: Thin, sharp attack with quick decay. (Available sizes: 16", 18")
- HI-HAT: Thin top over thick bottom for quick response and powerful beat. (Available size: 14" matched pair)
- CHINA TYPE: Turned-up edge produces a gong-like sound when played on one side, and a sharp crash effect when played on the opposite side. (Available sizes: 14" matched pair)
- SPLASH: Thin and light weight for sharp crash with instant decay. (11" only)
- BELL: A thicker cymbal with bell-like tone and long sustain. (8" only)
- CUPCHIME: For either delicate work or sharp accents. (Available sizes: 5", 6", 7")

Model	Size	Weight & Types
522	22"=56 cm	Ride, Medium
520	20"=51 cm	Ride, Medium
518	18"=46 cm	Ride, Medium, Crash
516	16"=41 cm	Medium, Crash
514HT	14"=35 cm	Hi-Hat Top
514HB	14"=35 cm	Hi-Hat Bottom
520CT	20"=51 cm	China Type
518CT	18"=46 cm	China Type
511SP	11"=28 cm	Splash
508B	8"=20 cm	Bell
507C	7"=18 cm	Cupchime
506C	6"=15 cm	Cupchime
505C	5"=13 cm	Cupchime

Note: Please add letter R=Ride, M=Medium, or C=Crash after the model number for your preference.

# CX-300

Priced for beginners with many of the quality features found in cymbals costing much more, Pearl's CX-300 series gives the young drummer a brilliant tone color with a durability uncommon in this price range. An extremely affordable way to begin. See chart below for available sizes and types.



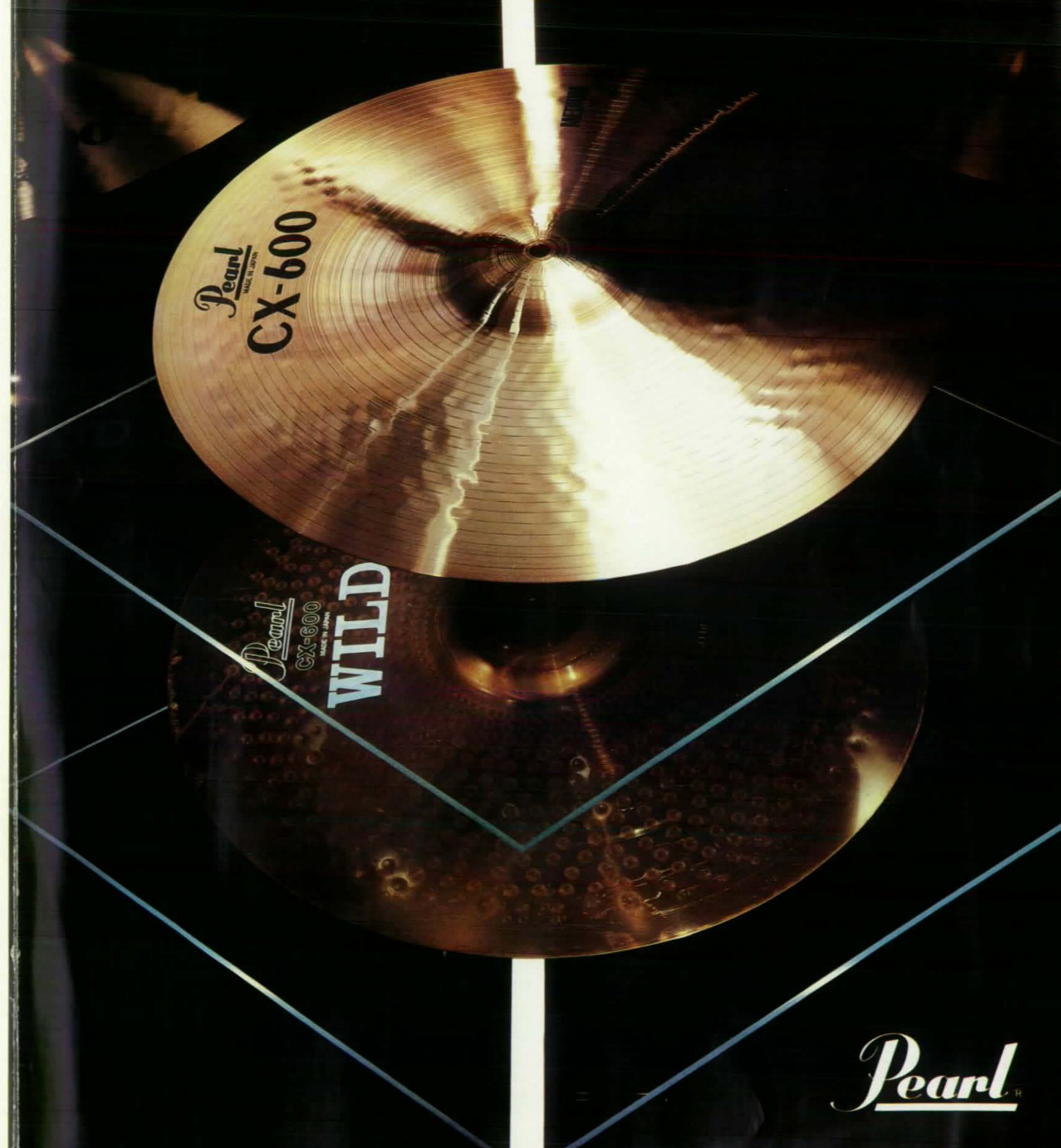
Model	Size	Weight & Types
322	22"=56 cm	Ride
320	20"=51 cm	Ride
318	18"=46 cm	Crash
316	16"=41 cm	Crash
314H	14"=35 cm	Hi-Hat

Pearl Dealer

Specifications are subject to change without notice.  
Jan. 1984 W590115 Printed in Japan

**Pearl**  
PEARL MUSICAL INSTRUMENT CO.

# PEARL CYMBALS



**Pearl**



# A NEW SOUND IS BORN..... A TRADITION OF EXCELLENCE BEGINS!

Modern technology combined with highly skilled craftsmanship transcend the mystique of "secret formulas" and "tradition" in Pearl's revolutionary CX-600 cymbals. Pearl cymbal smiths have long mastered the mechanical manufacturing techniques of rolling, tempering, hammering, lathing and brushing. And through years of experimentation with known precious metal combinations has created four series of cymbals to fully complement any musical style. Based on a scientific approach to creating a new cymbal sound, Pearl has now firmly established their own tradition of excellence. Always a leader on the world drum scene, Pearl's exciting CX-600 and CX-600 "WILD" series cymbals offer all players a new option in the never ending search for new sounds. Pearl's superior technological advancements and manufacturing expertise have produced these professional quality cymbals at a most affordable price.

*Cymbals*

## CX-600

The CX-600 series is Pearl's prestige line. Years of experimentation using only the highest quality materials have produced cymbals of exceptionally high quality. Their unique clear tone color blends well with any style of music. Special tempering and surface processing help prevent the familiar loss of sustain over years of use to protect your investment in a quality sound.

- RIDE:** Used mainly for rhythm work. Features longer sustain, suppressed overtones, and a larger cup for powerful accents. (Available sizes: 18", 20", 22")
- MEDIUM:** For Ride or Crash use. For softer, light rhythm work or heavy, powerful crash effects. (Available sizes: 16", 18", 20", 22")
- CRASH:** Provides a quick, sharp response for sharp accents. A bright clear sound with power to spare. (Available sizes: 16", 18")
- HI-HAT:** Medium weight top over a heavier bottom gives a tight "chick" sound when closed. Ample power to cut through, yet highly responsive to delicate stick work. (Available size: 14" matched pair)

Model	Size	Weight & Types
622	22" = 56 cm	Ride, Medium
620	20" = 51 cm	Ride, Medium
618	18" = 46 cm	Ride, Medium, Crash
616	16" = 41 cm	Medium, Crash
614HT	14" = 35 cm	Hi-Hat Top
614HB	14" = 35 cm	Hi-Hat Bottom

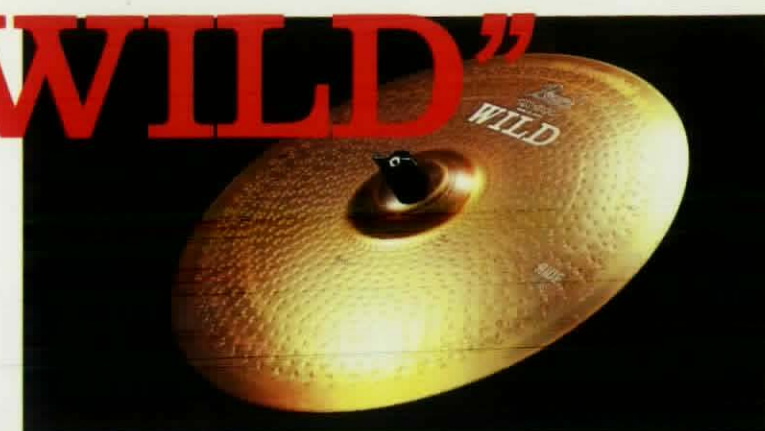
Note: Please add letter R=Ride, M=Medium, or C=Crash after the model number for your preference.



## CX-600 "WILD"

The CX-600 "WILD" series is specifically designed for hard rock music. Their sound projection is awesome! They cut through the Heavy Metal electronic sounds creating their own powerful crash effects. You're in command with Pearl's "WILD" series! And they're made to withstand the heaviest attacks.

Model	Size	Weight & Types
622W	22" = 56 cm	7 $\frac{1}{2}$ LB Ride
620W	20" = 51 cm	6LB Ride
618W	18" = 46 cm	3 $\frac{3}{8}$ LB Crash
616W	16" = 41 cm	3LB Crash
614WHT	14" = 35 cm	2 $\frac{1}{8}$ LB Hi-Hat Top (Crash)
614WHB	14" = 35 cm	3 $\frac{1}{8}$ LB Hi-Hat Bottom (Medium)
620WCT	20" = 51 cm	3 $\frac{1}{2}$ LB China Type
618WCT	18" = 46 cm	2 $\frac{1}{8}$ LB China Type



**RIDE:** A heavy, thick cymbal with a large cup. Exceptional projection, sharp attack, and the high pitch needed to cut through anything. (Available sizes: 20", 22")



**CRASH:** Thunderous crash effects. Powerfully piercing and devastating. (Available sizes: 16", 18")



**HI-HAT:** Provide a tight closed sound for a sharp, crisp rhythm beat. Ghostly powerful in half open position. (Available size: 14" matched pair)



**CHINA TYPE:** Produces an exotic "RIDE" sound on top side, and a new "attack" crash sound when set up reversed that is quite different from the conventional China type. (Available sizes: 18", 20")